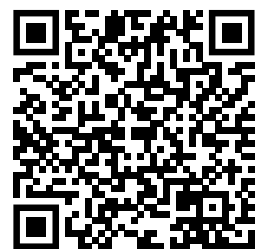


Hard to grip? No problem.

Finger Grippers mGrip

WWW.SCHMALZ.COM/FINGER-GRIPPERS



Finger Grippers mGrip

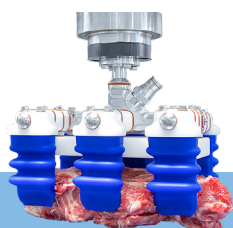
Do you think your workpiece is hard to grip?

Regardless of size, material, hygiene requirements, or sensitivity – Schmalz offers a comprehensive portfolio of finger grippers and control modules for cost-effective and reliable automation. Even for products that are hard to grip. Like a hand, only without fingerprints: Your workpieces are in good hands. Gentle gripping, secure holding, precise placement.

Compared to mechanical gripping systems, pneumatically controlled finger grippers are more adaptable and extremely sensitive – the optimal solution for every application. Maximum process reliability guaranteed.

Do you think we can't grip your workpiece?

Find your application on mGripedia: The central application platform for food automation, featuring over 100 practical videos.



Meat and Fish

Even under the highest hygiene standards and on wet surfaces – safe gripping guaranteed.



Vegetables and Fruit

Fast and gentle. No more squashed tomatoes or unwanted residues. Gripping every size, shape and texture.



Bakery

With precise fingertip sensitivity delicate baked goods are handled gently without any deformation.

GO DIRECTLY TO MGRIPEDIA:



Would you like to try it out for yourself?

Finger Gripper mGrip Basic Starter Sets. Fast delivery. Test it right away. Cost-effective. Scale up risk-free thanks to the modular design. Choose between a circular or parallel configuration.

Everything you need:

- Robot adapter
- Pneumatic connection
- Mounting plate & elements
- Finger modules



Example configuration of a parallel setup for gripping long workpieces. The parallel starter set accommodates up to six finger modules.



A circular design allows the secure gripping of round and fragile workpieces. The circular starter set supports configurations with up to four finger modules.

Finger Grippers mGrip

Hard to grip? No problem.

FINGER GRIPPERS

Finger Gripper mGrip



The gripper solution for food products with the highest hygiene standards.



Excellent hygiene suitability

Suitable for direct handling of food products thanks to FDA-compliant materials and optional hygienic design (degree of protection IP69K).



High efficiency

Fast pick-and-place applications are possible.

Finger Gripper mGrip Basic



The all-in-one solution for food, agriculture, packaging, and logistics.



Cost efficiency

Easy entry into automation by focusing on application requirements. Proven performance at an affordable price.



Complete flexibility

Adjustable finger modules and interchangeable plates enable quick and almost infinite gripper customization – ideal for system integrators and testing setups.

CONTROL MODULES

Control Modules SRCU Mini and SRCU Basic



Central control unit for all finger gripper variants.



Fast processes

High picking speed of up to 120 picks per minute.



User-friendly

Software interface for easy adjustment of gripping force, positioning, and finger opening (SRCU Mini) or intuitive manual gripping force control (SRCU Basic).

FINGER MODULES

Finger



The right size and the right material for every workpiece.



High process reliability





Soft, variable fingers with a specially designed geometry – for handling delicate and diverse products without causing damage.



Modularly adaptable

Blue = FDA-compliant – Food handling to the highest standards.
Green = Cost-effective – Non-food applications and flexible testing.

The right solution based on your needs

Grippers	Finger Gripper mGrip 	Finger Gripper mGrip Basic 
Direct contact with food	✓	○
Cleanability – degree of protection IP69K (high-pressure/steam jet cleaning)	✓	○ The gripper's finger modules are easy to clean
The materials are FDA-compliant	✓	○ When using the blue finger modules
Handling proteins or dough (e.g., meat, fish, dough)	✓	✗
Handling for moderate hygiene requirements (e.g., packaged products and logistics items, dry goods such as baked goods, vegetables, and fruit)	○	✓ This is particularly true given the cost-effective access to automation
Handling a wide variety of workpieces that are difficult to grip	○	✓
Handling of delicate workpieces	✓	✓
High-speed pick-and-place applications (up to 120 picks per minute)	✓	✓
Control Modules	Control Module SRCU Mini 	Control Module SRCU Basic 
Finger grippers with more than 5 finger modules*	✓	○
Handling delicate items (e.g., marshmallows, mushrooms)	✓	○
Handling workpieces with constantly changing dimensions	✓	○ The gripping force can be adjusted manually
High-speed pick-and-place applications with up to 120 picks per minute*	✓	○
✓ Especially true	○ True	✗ Not applicable

* The speed of the control module SRCU Basic depends on the gripper configuration and gripping force: the larger the gripper, the slower it is. Low gripping forces also have a negative effect on speed.