

Clamping piece with extension  
**SXT-CL-EXT-D40-150-T25**



Art.-Nr.: 10.07.13.00233

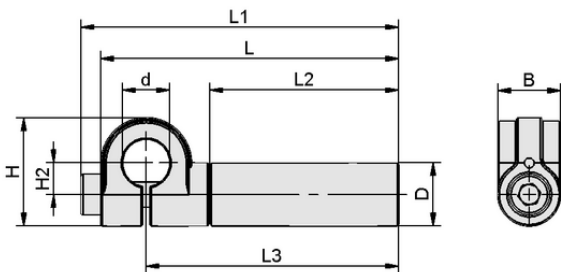


**Technical data**

Material	Aluminum
Outside diameter D	25.00 mm
Internal diameter d	40.00 mm
Connection 1	D40
Length L3	150.50 mm

SXT-CL-EXT-D40-150-T25

Clamps with extension SXT-CL-EXT are delivered as a ready-to-connect product.



**Design data**

Length L1	178.00 mm
Length L2	125.00 mm
Length L	177.50 mm
Width B	25.00 mm
Height H2	25.50 mm
Height H	65.00 mm
Outside diameter D	25.00 mm
Internal diameter d	40.00 mm
Length L3	150.50 mm

Design data SXT-CL-EXT-D40-150-T25



**Technical data**

Weight	220.00 g
Material	Aluminum
Product family	SXT
Shape	Tube



[WWW.SCHMALZ.COM/10.07.13.00233](http://WWW.SCHMALZ.COM/10.07.13.00233)

# Clamping piece with extension

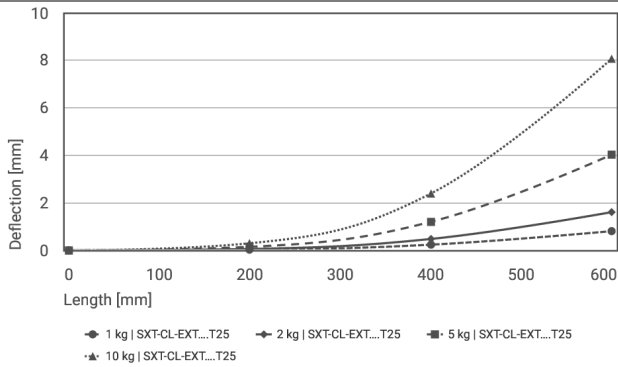
## SXT-CL-EXT-D40-150-T25



Art.-Nr.: 10.07.13.00233



### Performance data



Deflection pipe 25 x 3 mm



### Deflection pipe 25 x 3 mm

	0	200	400	600
1 kg   SXT-CL-EXT....T25	-	0.03	0.24	0.81
2 kg   SXT-CL-EXT....T25	-	0.06	0.48	1.61
5 kg   SXT-CL-EXT....T25	-	0.15	1.20	4.03
10 kg   SXT-CL-EXT....T25	-	0.30	2.39	8.07



[WWW.SCHMALZ.COM/10.07.13.00233](http://WWW.SCHMALZ.COM/10.07.13.00233)