

Clamping piece with extension
SXT-CL-EXT-A2-250-T25



Art.-Nr.: 10.07.13.00221

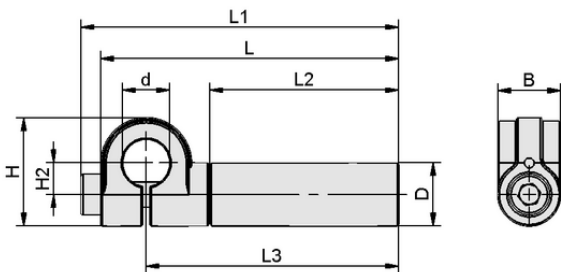


Technical data

Material	Aluminum
Outside diameter D	25.00 mm
Internal diameter d	19.00 mm
Connection 1	Bolt with slot Ø19mm
Length L3	250.50 mm

SXT-CL-EXT-A2-250-T25

Clamps with extension SXT-CL-EXT are delivered as a ready-to-connect product.



Design data

Length L1	276.50 mm
Length L2	225.00 mm
Length L	268.50 mm
Width B	25.00 mm
Height H2	12.50 mm
Height H	43.00 mm
Outside diameter D	25.00 mm
Internal diameter d	19.00 mm
Length L3	250.50 mm

Design data SXT-CL-EXT-A2-250-T25



Technical data

Weight	250.00 g
Material	Aluminum
Product family	SXT
Shape	Tube



WWW.SCHMALZ.COM/10.07.13.00221

Clamping piece with extension

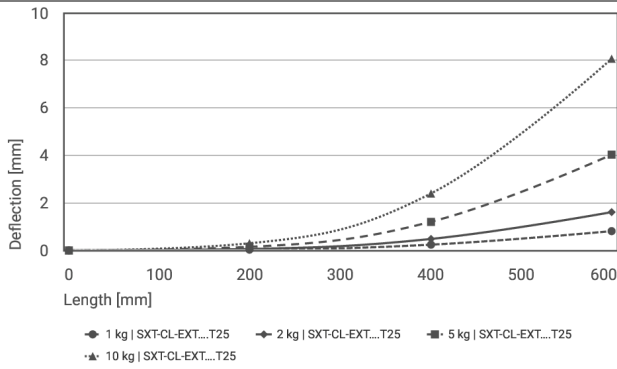
SXT-CL-EXT-A2-250-T25



Art.-Nr.: 10.07.13.00221



Performance data



Deflection pipe 25 x 3 mm



Deflection pipe 25 x 3 mm

	0	200	400	600
1 kg SXT-CL-EXT....T25	-	0.03	0.24	0.81
2 kg SXT-CL-EXT....T25	-	0.06	0.48	1.61
5 kg SXT-CL-EXT....T25	-	0.15	1.20	4.03
10 kg SXT-CL-EXT....T25	-	0.30	2.39	8.07



WWW.SCHMALZ.COM/10.07.13.00221