

Clamping piece

SXT-CL P 25 40 AL



Art.-Nr.: 10.07.13.00110



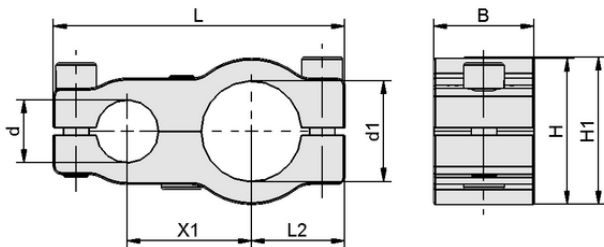
Technical data

Material	Aluminum
Utilization design	Pipe 25 / 40
Length L	116.00 mm
Width B	40.00 mm
Shape	Parallel

SXT-CL P 25 40 AL

The clamps SXT-CL are delivered as a ready-to-connect product.

Available accessories: Pipes SXT-RT



Design data

Length L2	37.20 mm
Length L	116.00 mm
Width B	40.00 mm
Height H1	58.50 mm
Height H	58.00 mm
Internal diameter d1	40.0 mm
Internal diameter d	25.00 mm
Thread G1	M10-F
Hole spacing X1	49.5 mm

Design data SXT-CL P 25 40 AL



WWW.SCHMALZ.COM/10.07.13.00110

1

Clamping piece

SXT-CL P 25 40 AL



Art.-Nr.: 10.07.13.00110



Technical data

Weight	390.00 g
Material	Aluminum
Product family	SXT
Shape	Parallel



WWW.SCHMALZ.COM/10.07.13.00110