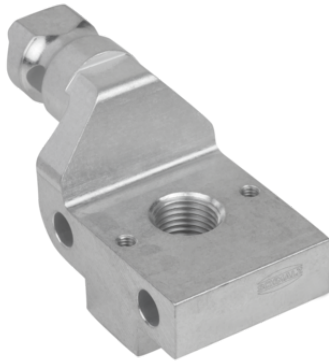


Art.-Nr.: 10.07.06.00465

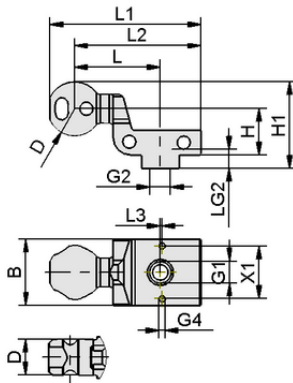
**Technical data**

Width B	35.00 mm
Connection 1	Bolt with slot Ø19mm
Suction cup connection	M16x1.5-F
Vacuum connection	G 1/4"-F
Shape	Ejector connection

HT-SG A2 E 35 M16x1.5-IG

The holders for suction cups HT-SG E are delivered as a ready-to-connect product.

Available accessories: Mounting kit

**Design data**

Length L1	72.50 mm
Length L2	60.80 mm
Length L	39.30 mm
Width B	35.00 mm
Height H1	41.20 mm
Height H	24.50 mm
Outside diameter D	19.00 mm
Thread G1	G 1/4"-F
Thread G2	M16x1.5-F
Thread length LG2	10.0 mm
Length L3	1.00 mm
Hole spacing X1	28.0 mm
Thread G4	M4-F

Design data HT-SG A2 E 35 M16x1.5-IG



Holder tooling suction Cup

# HT-SG A2 E 35 M16x1.5-IG



Art.-Nr.: 10.07.06.00465



## Technical data

Weight	79.40 g
Product family	HT-SG-E



## Ordering Data Accessories 10.07.06.00465

Typ		Item number
Mounting set	SET HT-SG..E VSi-HD M4x30	10.07.06.00640
Mounting set	SET HT-SG..E VSi-HD M4x12	10.07.06.00642



[WWW.SCHMALZ.COM/10.07.06.00465](http://WWW.SCHMALZ.COM/10.07.06.00465)