

Art.-Nr.: 10.07.06.00464

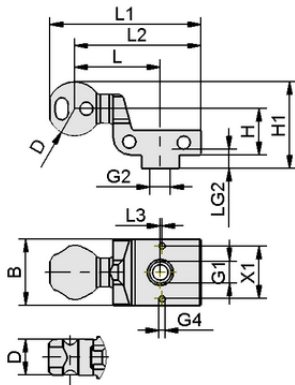
**Technical data**

|                        |                    |
|------------------------|--------------------|
| Width B                | 35.00 mm           |
| Connection 1           | Ball head 32 mm    |
| Suction cup connection | M16x1.5-F          |
| Vacuum connection      | G 1/4"-F           |
| Shape                  | Ejector connection |

HT-SG A5 E 35 M16x1.5-IG

The holders for suction cups HT-SG E are delivered as a ready-to-connect product.

Available accessories: Mounting kit



Design data HT-SG A5 E 35 M16x1.5-IG

**Design data**

|                    |           |
|--------------------|-----------|
| Length L1          | 82.00 mm  |
| Length L2          | 67.00 mm  |
| Length L           | 45.50 mm  |
| Width B            | 35.00 mm  |
| Height H1          | 47.70 mm  |
| Height H           | 24.50 mm  |
| Outside diameter D | 32.00 mm  |
| Thread G1          | G 1/4"-F  |
| Thread G2          | M16x1.5-F |
| Thread length LG2  | 10.0 mm   |
| Length L3          | 1.00 mm   |
| Hole spacing X1    | 28.0 mm   |
| Thread G4          | M4-F      |



Holder tooling suction Cup

# HT-SG A5 E 35 M16x1.5-IG



Art.-Nr.: 10.07.06.00464



## Technical data

|                |          |
|----------------|----------|
| Weight         | 104.60 g |
| Product family | HT-SG-E  |



## Ordering Data Accessories 10.07.06.00464

| Typ          |                           | Item number    |
|--------------|---------------------------|----------------|
| Mounting set | SET HT-SG..E VSi-HD M4x30 | 10.07.06.00640 |
| Mounting set | SET HT-SG..E VSi-HD M4x12 | 10.07.06.00642 |



[WWW.SCHMALZ.COM/10.07.06.00464](http://WWW.SCHMALZ.COM/10.07.06.00464)