

Compact ejector

SMPi 25 IMP RD M12-5



Art.-Nr.: 10.02.02.03365



Technical data

Nozzle diameter	2.5 mm
Electrical connection	Male connect M12, 5 pol
Protection type IP	IP 65
Max. vacuum	-850 mbar
Air consumption suction	290.0 l/min
Suction rate (max.)	185.0 l/min
Pressure range (operating pressure) [bar]	4.0 ... 7.0 bar
Control valve	Impulse valve
Operation mode	Digital air-saving function

SMPi 25 IMP RD M12-5

Compact ejector SCPi / SMPi is delivered as a ready-to-connect product (without connection cable).

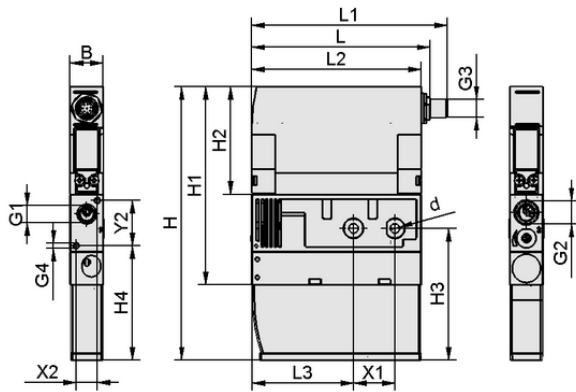
Available accessories: connection cable, connection distributor, compressed air connection plate, ejector blanking plate, quick change Connection (Adapter Quick Change), ejector tester



WWW.SCHMALZ.COM/10.02.02.03365

1

Art.-Nr.: 10.02.02.03365

**Design data**

Length L1	129.70 mm
Length L2	112.50 mm
Length L	118.50 mm
Width B	22.00 mm
Height H1	131.50 mm
Height H2	71.50 mm
Height H	181.50 mm
Internal diameter d	6.60 mm
Thread G1	G1/4"-F
Thread G2	G3/8"-F
Length L3	67.50 mm
Height H3	87.50 mm
Height H4	76.00 mm
Hole spacing Y2	30.0 mm
Hole spacing X1	27.5 mm
Hole spacing X2	14.0 mm
Thread G4	M4-F
Thread G3	M12x1-M

Design data SMPi 25 IMP RD M12-5

**Technical data**

Nozzle diameter	2.5 mm
Recommended hose internal diameter compressed air	8.0 mm
Recommended hose internal diameter vacuum	9.0 mm
Degree of evacuation	85.0 %
Sound pressure level free	78.0 dB(A)
Weight	0.560 kg
Max. air consumption blow-off	200.0 l/min
Air consumption suction	10.241 cfm
Suction rate (max.)	6.533 cfm
Pressure range (operating pressure) [bar]	4.0 ... 7.0 bar
Operating temperature	0 ... 50 °C
Pressure range (operating pressure) [psi]	58.0 ... 101.5
Max. vacuum	-25.100 inHg
Product family	SMPi
Control valve	Impulse valve

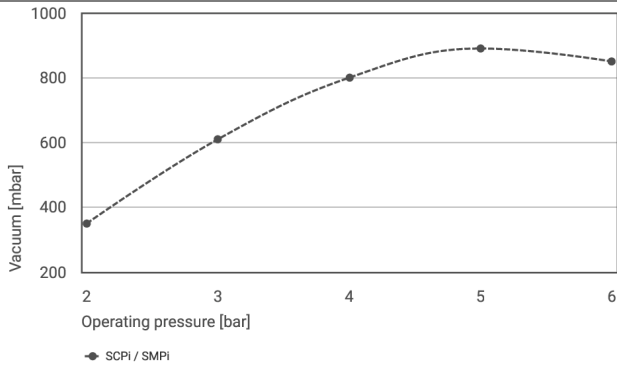
Note: The supply voltage for vacuum switches and solenoid valves is 24V DC Air consumption: At optimal operating pressure Hose diameter: For max. length 2 m



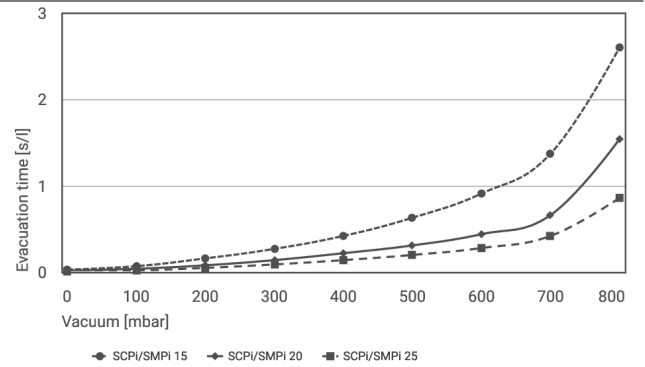
Art.-Nr.: 10.02.02.03365



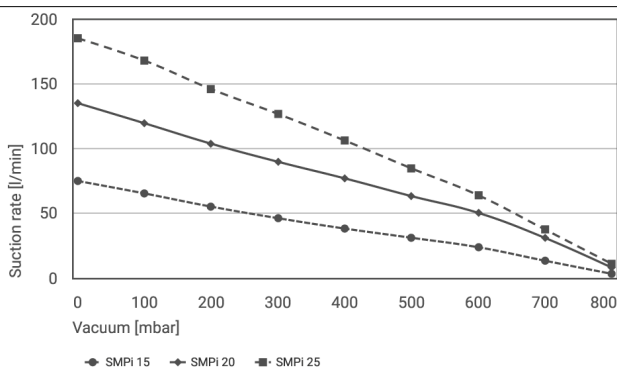
Performance data



Achievable vacuum at various operating pressures



Evacuation time for various vacuum ranges [s/l]



Suction rate at various degrees of evacuation [l/min]



Achievable vacuum at various operating pressures

	2	3	4	5	6
SCPi / SMPi	350	610	800	890	850



Art.-Nr.: 10.02.02.03365

**Evacuation time for various vacuum ranges [s/l]**

	0	100	200	300	400	500	600	700	800
SCPi/SMPi 15	0.03	0.07	0.16	0.27	0.42	0.63	0.91	1.37	2.60
SCPi/SMPi 20	0.02	0.04	0.08	0.14	0.22	0.31	0.44	0.66	1.54
SCPi/SMPi 25	0.01	0.02	0.05	0.09	0.14	0.20	0.28	0.42	0.86

**Suction rate at various degrees of evacuation [l/min]**

	0	100	200	300	400	500	600	700	800
SMPi 15	75.0	65.4	55.2	46.3	38.3	31.2	23.9	13.5	3.4
SMPi 20	135.0	119.5	103.7	89.8	77.0	63.3	50.4	31.1	8.2
SMPi 25	185.0	167.8	145.8	126.7	106.2	84.7	64.0	37.6	11.1

**Ordering Data Accessories 10.02.02.03365**

Typ		Item number
Connection cable	ASK B-M12-5 5000 K-5P	21.04.05.00080
Distributor	ASV SM/CPi B-M12-5 3xS-M12-4	10.02.02.03372
Distributor	ASV SM/CPi B-M12-5 2xS-M12-4	10.02.02.03490
Compressed-air connection plate	GP 2 SMP 15..30/SCP 20..30	10.02.02.00917
Compressed-air connection plate	GP 3 SMP 15..25/SCP 20..25	10.02.02.00918
Compressed-air connection plate	GP 4 SMP 15..20/SCP 20	10.02.02.00919
Compressed-air connection plate	GP 5 SMP 15	10.02.02.00920
Compressed-air connection plate	GP 6 SMP 15	10.02.02.00921
Ejector blanking plate	EJEK-PL SMP(i)15..30/SCP(i)20..30	10.02.02.00728
Adapter Quick Change	ADP-Q 90.5x22x29.7 SMPi/SCPi	10.02.02.03463
Ejector tester	EJEK-TEST SMPi/SCPi	10.02.02.03588
Vacuum cup filter	VFT G3/8-IG 80	10.07.01.00122

**Ordering Data Spare Parts 10.02.02.03365**

Typ		Item number
Silencer (cube-shaped)	SD 111x21x45 SMPi/SCPi	10.02.02.03381



Compact ejector

SMPi 25 IMP RD M12-5



Art.-Nr.: 10.02.02.03365



Ordering Data Wear Parts 10.02.02.03365

Typ		Item number
Set of wearing parts ejector	VST SMPi/SCPI	10.02.02.99965
Set of wearing parts ejector	VST SMPi-ERW	10.02.02.99964



WWW.SCHMALZ.COM/10.02.02.03365