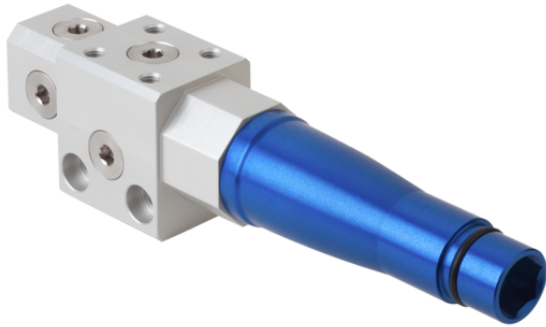


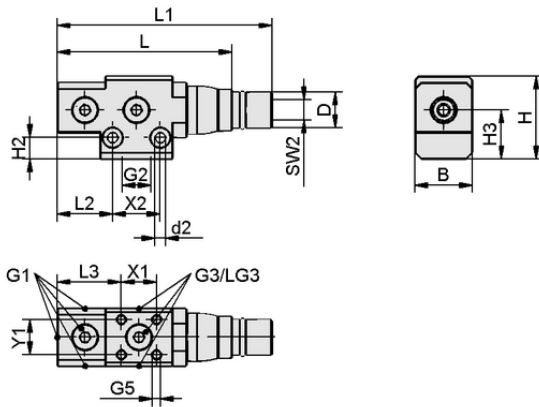
Art.-Nr.: 10.02.01.01727

**Technical data**

Attribute	Value
Nozzle diameter	1.6 mm
Degree of evacuation	90.0 %
Air consumption suction	103.0 l/min
Suction rate (max.)	308.8 l/min
Size	22.00
Optimal operating pressure	4.00 bar
Number of stages	3
Shape	High vacuum

SBP HV 3 16 22

The basic ejectors SBP-HV/HF is delivered as a ready-to-connect product.

**Design data**

Attribute	Value
Length L1	178.50 mm
Length L2	32.50 mm
Length L	160.50 mm
Width B	35.00 mm
Height H2	9.50 mm
Height H	44.00 mm
Outside diameter D	20.00 mm
d2	6.4 mm
Thread G1	G1/4"-F
Thread G2	G3/8"-F
Thread length LG3	7.0 mm
Spanner size SW2	14.0 mm
Length L3	34.50 mm
Height H3	25.50 mm
Hole spacing Y1	22.0 mm
Hole spacing X1	22.0 mm
Hole spacing X2	26.0 mm
Thread G3	G1/4"-F
Thread G5	M6-F

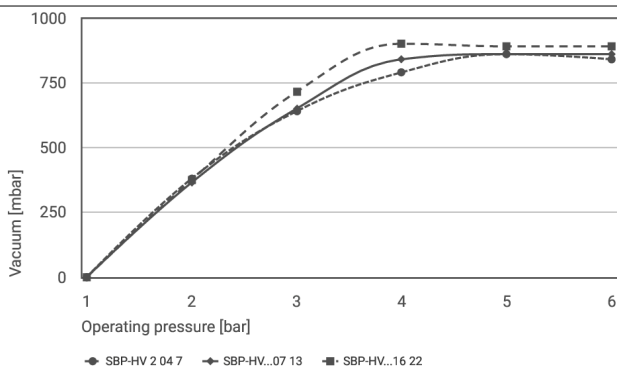
Design data SBP HV 3 16 22



Art.-Nr.: 10.02.01.01727

**Technical data**

Attribute	Value
Nozzle diameter	1.6 mm
Recommended hose internal diameter compressed air	6.0 mm
Recommended hose internal diameter vacuum	12.0 mm
Degree of evacuation	90.0 %
Sound pressure level suction	72.0 dB(A)
Sound pressure level free	80.0 dB(A)
Weight	280.00 g
Air consumption suction	3.637 cfm
Suction rate (max.)	10.904 cfm
Optimal operating pressure	4.00 bar
Number of stages	3
Pressure range (operating pressure) [bar]	2.0 ... 6.0 bar
Operating temperature	0 ... 60 °C
Pressure range (operating pressure) [psi]	29.0 ... 87.0
Optimal pressure	58.0 psi
Product family	SBP-HV-HF

**Performance data**

Achievable vacuum at various operating pressures



Art.-Nr.: 10.02.01.01727

**Achievable vacuum at various operating pressures**

	1	2	3	4	5	6
SBP-HV 2 04 7	-	380	640	790	860	840
SBP-HV...07 13	-	365	650	840	860	860
SBP-HV...16 22	-	375	715	900	890	890

**Further documentation**CAD data and other documents relating to the article can be found at: [www.schmalz.com/10.02.01.01727](http://www.schmalz.com/10.02.01.01727)**Ordering Data Accessories 10.02.01.01727**

Typ		Item number
Mounting bracket	BEF-WIN 50x40x41 5 SFE-22	10.08.03.00315
Mounting set	SET SFE 22	10.02.01.01577
Quick release valve	SEV G1/8-IG G1/4-AG	10.02.01.01471
Silencer (round)	SD 29x70 SHC 22	10.02.01.01517
Mounting set	SET SBP-PXT D30-I	10.02.01.02048
Silencer (round)	SD 29x121.5 SHC 22	10.02.01.01831

**Ordering Data Spare Parts 10.02.01.01727**

Typ		Item number
Ejector module	SEP HV 3 16 22	10.02.01.01397
Schmalz Fixation Element	SFE 22 AL	10.02.01.01421
Schmalz Holder Cap	SHC 3 22	10.02.01.01514

