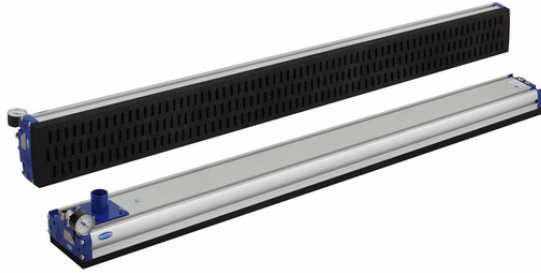


Art.-Nr.: 10.01.38.03442



## Technical data

Attribute	Value
Construction vacuum switch	PNP switching
Weight	6.400 kg
Shape fittings	Straight
Max. air consumption blow-off	800.0 l/min
Additional function area gripper	1x control valve vacuum / blow-off
Material type	Foam open, height 2 x 10 mm
Length L	1,432.00 mm
Width B	130.00 mm
Outside diameter D	60.00 mm
Product family	FMP
Arrangement	3R18

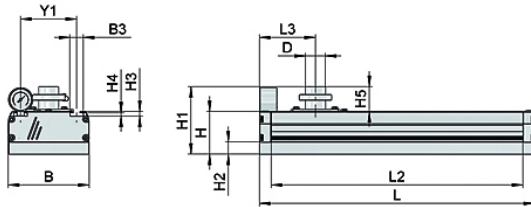
FMP-S-SW70 1432 3R18 O10O10 F G60

- Integrated control valves at FMP-S (optional)
- Control of vacuum on/off (24V DC, normally open) and blow off on/off (24V DC, normally closed), as well as hose accumulator preload and blower ventilation function with version FMP-S
- Integrated in the end cover
- Electrical connection: M12 plug (4-pole)

Available spare parts: sealing foam (DI-PL), suction cup (SPB2)



Art.-Nr.: 10.01.38.03442

**Design data**

Attribute	Value
Length L2	1,392.00 mm
Length L	1,432.00 mm
Width B	130.00 mm
Height H1	116.00 mm
Height H2	20.00 mm
Height H	70.00 mm
Outside diameter D	60.00 mm
Length L3	77.00 mm
Width B3	21.60 mm
Height H3	7.70 mm
Height H4	5.50 mm
Hole spacing Y1	90.0 mm
Valve type	SW
Height H5	46.00 mm

Note: Vacuum hose with internal diameter equal to dimension D required. See Technical Data -> Shape

Design data FMP-S-SW70 1432 3R18 O10010 F G60

**Technical data**

Attribute	Value
Weight	6.400 kg
Additional function area gripper	1x control valve vacuum / blow-off
Material type	Foam open, height 2 x 10 mm
Number of suction cells	231
Required suction capacity for $p_u = -0.25$ bar	1,050.0 l/min
Product family	FMP
Arrangement	3R18
Voltage	24V - DC
with	Filter
Sealing element	Sealing Foam
Suction force at -250 mbar	1,530.00 N

Note: Air consumption: At 5.5 bar compressed air input pressure / Suction force: At a vacuum of -0.25 bar and full occupancy of the gripper with a workpiece typical for the application (wooden board with textured surface) / Required suction capacity: The external vacuum generator used must provide at least the specified suction volume (at the vacuum connection piece of the FMP) at a vacuum of -0.25 bar, but max. 135 % of the specified suction volume

**Further documentation**

CAD data and other documents relating to the article can be found at: [www.schmalz.com/10.01.38.03442](http://www.schmalz.com/10.01.38.03442)



Art.-Nr.: 10.01.38.03442

**Discontinued item**

The product family will be discontinued and is available until **31.12.2027**  
Starting from this time, the article can no longer be ordered.  
alternative article

**Ordering Data Accessories 10.01.38.03442**

Typ		Item number
Cover (complex)	ABDK-PROF-10x7x1450-KU-SW-FXP-FMP	26.07.03.00002
Flange plate	FLAN-PL 120x85x10 ST FLGR	10.01.10.05701
Flexolink	FLK G1/2-IG G1/2-AG	10.01.03.00175
Suspension, flexible	FST-FLEX 25 HD1 G1/2-AG G3/8-IG	10.01.10.05697
Suspension, flexible	FST-FLEX 25 HD2 G1/2-AG G3/8-IG	10.01.10.05695
Suspension, flexible	FST-FLEX 50 HD1 G1/2-AG G3/8-IG	10.01.10.05687
Suspension, flexible	FST-FLEX 50 HD2 G1/2-AG G3/8-IG	10.01.10.05168
Suspension, flexible	FST-FLEX 75 HD1 G1/2-AG G3/8-IG	10.01.10.05698
Suspension, flexible	FST-FLEX 75 HD2 G1/2-AG G3/8-IG	10.01.10.05696
Suspension, rigid	FST-STARR 25 HD1 G1/2-AG G3/8-IG	10.01.10.05810
Suspension, rigid	FST-STARR 25 HD2 G1/2-AG G3/8-IG	10.01.10.05806
Suspension, rigid	FST-STARR 50 HD1 G1/2-AG G3/8-IG	10.01.10.05809
Suspension, rigid	FST-STARR 50 HD2 G1/2-AG G3/8-IG	10.01.10.05805
Suspension, rigid	FST-STARR 75 HD1 G1/2-AG G3/8-IG	10.01.10.05808
Suspension, rigid	FST-STARR 75 HD2 G1/2-AG G3/8-IG	10.01.10.05803
Flange module	MOD-FLAN 120x120 FXP-FMP	10.01.21.00244
Mounting set reed switch	SET fuer-Sensor(FXP/FMP)	10.01.38.01194
Mounting set	SET FXC-FMC	10.01.21.01291
Mounting set	SET FXP-FMP	10.01.21.02407
Mounting set	SET FXP-FMP 4NUTSTEIN G20	10.01.21.00243
Dust filter	STF 60 P 4.5 SSD	10.07.01.00259
Vacuum gauge	VAM 40 V U BAR	10.07.02.00046
Valve unit	VENT-EINH 8/6 NC 24V-DC	10.01.21.02405
Vacuum hose (meter)	VSL 71-60 PU-DS-AS TR	10.07.09.00034
Vacuum switch (inst)	VS-MONT 50x15.8x25 VS	10.06.02.00343
Vacuum switch (inst)	VS-MONT 84x21x34.5 VSi-V FMP	10.01.38.04053
Vacuum distributor	VTR-SL 3x RST60	10.01.10.02779
Connection cable	ASK B-M12-5 5000 K-5P	21.04.05.00080
Vacuum hose (meter)	VSL 8-6 PU MI-TR	10.07.09.00003
Flange plate	FLAN-PL 120x120x10 FXC-FMC	10.01.21.00313
Flexolink	FLK G1/2-IG G1/2-AG V	10.01.03.00207
Hose connector, straight (inst)	SCHL-AN 60-79x79x45 FMP-S	10.01.38.03582
Hose connector, bent (inst)	SCHL-AN W 60-79x79x45 FMP-S	10.01.38.03983
Sealing plate (inst)	VRS-PL 79x79x12 SPZ G2-IG	10.01.21.01280



Art.-Nr.: 10.01.38.03442



## Ordering Data Spare Parts 10.01.38.03442

Typ		Item number
Valve assembly	VENT-BGR FMP-S-50	10.01.38.03682
Masking foil (glued)	MASK-FOL SW70 1392 3R18 FXP-FMP	10.01.38.00506



## Ordering Data Wear Parts 10.01.38.03442

Typ		Item number
Sealing plate (inst)	DI-PL 1432-3R18 O10010 F FXP-FMP	10.01.38.00410

