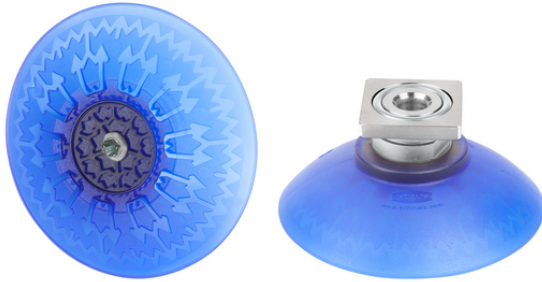


Bell suction cup (round)

## SAX 80 ED-85 RA



Art.-Nr.: 10.01.19.00384

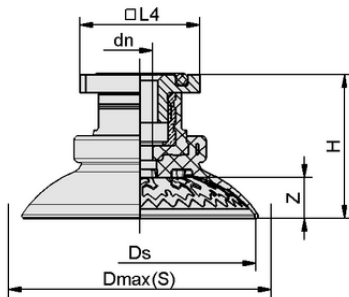


### Technical data

Attribute	Value
Suction cup material	Elastodur ED
Material hardness [Shore A]	85.0 Shore A
Size	80.00
Number of folds	0.0
Connection	Rectangular adapter

SAX 80 ED-85 RA

Suction cup SAX, available in various diameters, is delivered with connection nipple vulcanized to elastomer part.



### Design data

Attribute	Value
Height H	39.20 mm
Nominal diameter dn	6.75 mm
Key width SW1	22.0 mm
Spring stroke Z	13.9 mm
Diameter Ds	81.0 mm
Length L4	31.80 mm
Diameter Dmax(S)	92.2 mm

Design data SAX 80 ED-85 RA



[WWW.SCHMALZ.COM/10.01.19.00384](http://WWW.SCHMALZ.COM/10.01.19.00384)

1

Art.-Nr.: 10.01.19.00384



## Technical data

Attribute	Value
Suction cup material	Elastodur ED
Material hardness [Shore A]	85.0 Shore A
Workpiece radius min. (convex)	32.5 mm
Suction force (-600mbar)	270.00 N
Weight	48.30 g
Lateral force	192.0 N
Lateral force oily surface	269.0 N
Volume	51.000 cm <sup>3</sup>
Size	80.00
Number of folds	0.0
Connection	Rectangular adapter
Product family	SAX

Note: Suction force: The suction force values are theoretical values at -0.6 bar vacuum and a dry, smooth and even workpiece surface – they are specified without safety factors. Hose inner diameter: The recommended hose diameter refers to a hose length of approx. 2 m



## Further documentation

CAD data and other documents relating to the article can be found at: [www.schmalz.com/10.01.19.00384](http://www.schmalz.com/10.01.19.00384)

