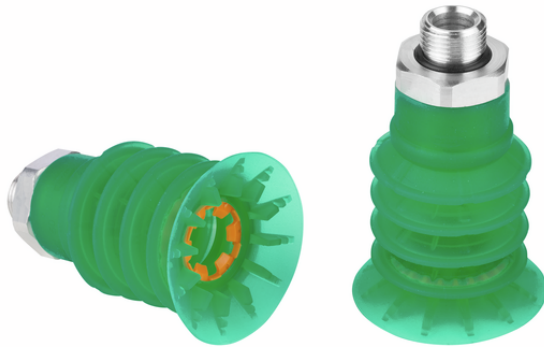


Bellows suction cups (round)
SPB4f 50 SI-55 G3/8-AG



Art.-Nr.: 10.01.06.03552



Technical data

| | |
|-----------------------------|--------------|
| Suction cup material | Silicone SI |
| Material hardness [Shore A] | 55.0 Shore A |
| Size | 50.00 |
| Number of folds | 4.5 |
| Thread G1 | G3/8"-M |

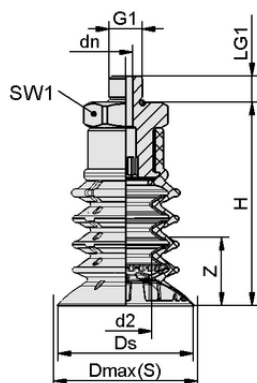
SPB4f 50 SI-55 G3/8-AG

Suction cup SPB4f (elastomer part + connection element) with integrated bag stabilizer is delivered assembled. The assembly consists of:

- Suction cup of type SPB4f – elastomer part, available in various diameters
- Connection element of type SC – available with various threads

Available spare parts: suction cup SPB4f, Schmalz-Connector

Available accessories: filter screen (sieve, round), hose clamp



Design data

| | |
|---------------------|----------|
| Height H | 72.50 mm |
| Nominal diameter dn | 10.30 mm |
| d2 | 21.0 mm |
| Thread G1 | G3/8"-M |
| Thread length LG1 | 10.0 mm |
| Key width SW1 | 27.0 mm |
| Spring stroke Z | 26.0 mm |
| Diameter Ds | 49.7 mm |
| Diameter Dmax(S) | 52.0 mm |

Design data SPB4f 50 SI-55 G3/8-AG



WWW.SCHMALZ.COM/10.01.06.03552

Bellows suction cups (round)
SPB4f 50 SI-55 G3/8-AG



Art.-Nr.: 10.01.06.03552



Technical data

| | |
|--------------------------------|------------------------|
| Suction cup material | Silicone SI |
| Material hardness [Shore A] | 55.0 Shore A |
| Hose inner diameter (recom.) d | 12.0 mm |
| Pull-off force | 35.00 N |
| Suction force (-600mbar) | 41.00 N |
| Weight | 44.10 g |
| Volume | 33.110 cm ³ |
| Number of folds | 4.5 |
| Suction force at -400 mbar | 27.30 N |
| Suction force at -200 mbar | 13.70 N |
| Product family | SPB4f |

Note: Suction force: The suction force values are theoretical values at -0.6 bar vacuum and a dry, smooth and even workpiece surface – they are specified without safety factors. Hose inner diameter: The recommended hose diameter refers to a hose length of approx. 2 m



Ordering Data Accessories 10.01.06.03552

| Typ | | Item number |
|------------|-----------------|----------------|
| Hose clamp | SSB 20-32 ST-VZ | 10.07.10.00003 |



Ordering Data Spare Parts 10.01.06.03552

| Typ | | Item number |
|-----------------------------|----------------------|----------------|
| Schmalz-Connector | SC 090 G3/8-AG | 10.01.06.02791 |
| Bellows suction cup (round) | SPB4f 50 SI-55 SC090 | 10.01.06.03266 |



WWW.SCHMALZ.COM/10.01.06.03552