

Bellows suction cup (round)

## FGA 25 NBR-55 N016



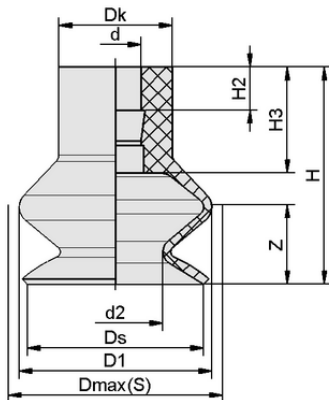
Art.-Nr.: 10.01.06.00376



### Technical data

Attribute	Value
Suction cup material	Nitrile rubber NBR
Material hardness [Shore A]	55.0 Shore A
Size	25.00
Number of folds	1.5

FGA 25 NBR-55 N016



### Design data

Attribute	Value
Height H2	3.80 mm
Height H	23.00 mm
Outside diameter D1	25.00 mm
Head diameter Dk	10.0 mm
d2	9.9 mm
Internal diameter d	4.50 mm
Spring stroke Z	9.0 mm
Diameter Ds	22.5 mm
Height H3	8.90 mm
Diameter Dmax(S)	26.5 mm

Note: Acceptable dimensional tolerances for elastomer parts concerning to DIN ISO 3302-1 M3

Design data FGA 25 NBR-55 N016



[WWW.SCHMALZ.COM/10.01.06.00376](http://WWW.SCHMALZ.COM/10.01.06.00376)

Art.-Nr.: 10.01.06.00376

**Technical data**

Attribute	Value
Suction cup material	Nitrile rubber NBR
Workpiece radius min. (convex)	20.0 mm
Suction force (-600mbar)	5.30 N
Weight	2.70 g
Size	25.00
Number of folds	1.5
Product family	FGA

Note: Suction force: The suction force values are theoretical values at -0.6 bar vacuum and a dry, smooth and even workpiece surface – they are specified without safety factors. Hose inner diameter: The recommended hose diameter refers to a hose length of approx. 2 m

**Further documentation**

CAD data and other documents relating to the article can be found at: [www.schmalz.com/10.01.06.00376](http://www.schmalz.com/10.01.06.00376)

**Ordering Data Accessories 10.01.06.00376**

Typ		Item number
Suction Cup Connection Nipples	SA-NIP N016 G1/8-AG DN350	10.01.06.05735
Suction Cup Connection Nipples	SA-NIP N016 G1/8-IG DN350	10.01.06.05731
Suction Cup Connection Nipples	SA-NIP N016 M5-AG DN250	10.01.06.00123
Schmalz Pad Insert PEEK	SPI 25 PEEK	10.01.06.03286

