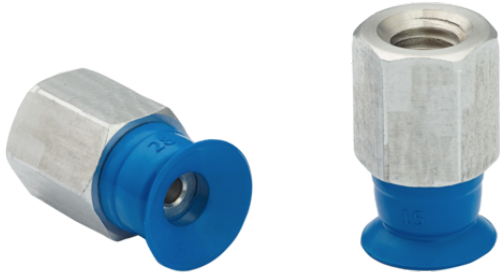


Flat suction cup (round)

## SUF 6 HT1-60 M5-IG



Art.-Nr.: 10.01.01.14234



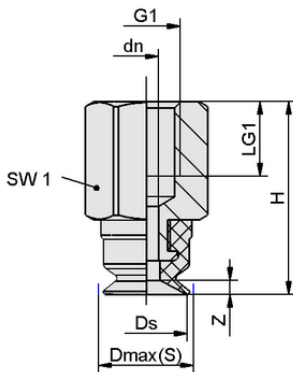
### Technical data

Suction cup material	High temperature material HT1
Material hardness [Shore A]	60.0 Shore A
Size	6.00
Vacuum connection	M5-F

SUF 6 HT1-60 M5-IG

Suction cup SUF (elastomer part + connector) is delivered assembled.

Available spare parts: suction cup SUF, connector SC



### Design data

Height H	14.20 mm
Nominal diameter dn	1.80 mm
Thread G1	M5-F
Thread length LG1	5.5 mm
Key width SW1	8.0 mm
Spring stroke Z	0.6 mm
Diameter Ds	6.0 mm
Diameter Dmax(S)	6.8 mm

Design data SUF 6 HT1-60 M5-IG



[WWW.SCHMALZ.COM/10.01.01.14234](http://WWW.SCHMALZ.COM/10.01.01.14234)

1

Flat suction cup (round)

## SUF 6 HT1-60 M5-IG



Art.-Nr.: 10.01.01.14234



### Technical data

Suction cup material	High temperature material HT1
Material hardness [Shore A]	60.0 Shore A
Hose inner diameter (recom.) d	2.0 mm
Workpiece radius min. (convex)	8.0 mm
Pull-off force	1.40 N
Suction force (-600mbar)	1.40 N
Weight	1.10 g
Volume	0.020 cm <sup>3</sup>
Size	6.00
Number of folds	0.0
Product family	SUF

Note: Suction force: The suction force values are theoretical values at -0.6 bar vacuum and a dry, smooth and even workpiece surface – they are specified without safety factors. Hose inner diameter: The recommended hose diameter refers to a hose length of approx. 2 m



### Ordering Data Spare Parts 10.01.01.14234

Typ		Item number
Schmalz-Connector	SC 020 M5-IG	10.01.06.04306
Flat suction cup (round)	SUF 6 HT1-60 SC020	10.01.01.13985



[WWW.SCHMALZ.COM/10.01.01.14234](http://WWW.SCHMALZ.COM/10.01.01.14234)