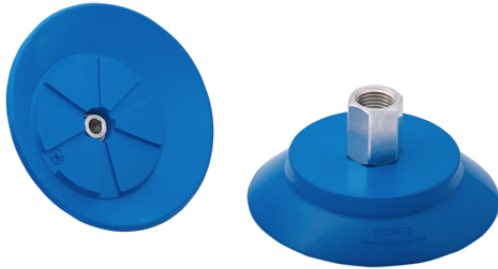


Flat suction cup (round)

SUF 60 HT1-60 G1/4-IG



Art.-Nr.: 10.01.01.14082



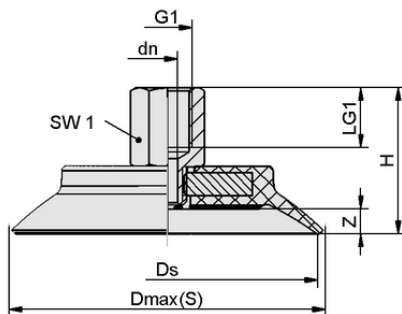
Technical data

Attribute	Value
Suction cup material	High temperature material HT1
Material hardness [Shore A]	60.0 Shore A
Size	60.00
Vacuum connection	G1/4"-F

SUF 60 HT1-60 G1/4-IG

Suction cup SUF (elastomer part + connector) is delivered assembled.

Available spare parts: suction cup SUF, connector SC



Design data

Attribute	Value
Height H	33.90 mm
Nominal diameter dn	5.10 mm
Thread G1	G1/4"-F
Thread length LG1	12.0 mm
Key width SW1	17.0 mm
Spring stroke Z	5.5 mm
Diameter Ds	60.0 mm
Diameter Dmax(S)	66.4 mm

Design data SUF 60 HT1-60 G1/4-IG



WWW.SCHMALZ.COM/10.01.01.14082

1

Flat suction cup (round)

SUF 60 HT1-60 G1/4-IG



Art.-Nr.: 10.01.01.14082



Technical data

Attribute	Value
Suction cup material	High temperature material HT1
Material hardness [Shore A]	60.0 Shore A
Hose inner diameter (recom.) d	6.0 mm
Workpiece radius min. (convex)	75.0 mm
Pull-off force	140.00 N
Suction force (-600mbar)	140.00 N
Weight	40.30 g
Volume	12.700 cm ³
Size	60.00
Number of folds	0.0
Product family	SUF

Note: Suction force: The suction force values are theoretical values at -0.6 bar vacuum and a dry, smooth and even workpiece surface – they are specified without safety factors. Hose inner diameter: The recommended hose diameter refers to a hose length of approx. 2 m



Further documentation

CAD data and other documents relating to the article can be found at: www.schmalz.com/10.01.01.14082



WWW.SCHMALZ.COM/10.01.01.14082