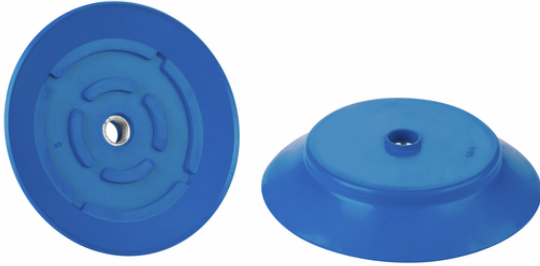


Flat suction cup (round)

PFG 95 HT1-60 N009 M10x1.25-IG



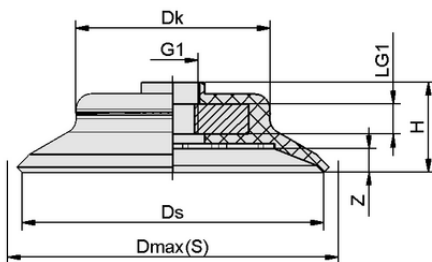
Art.-Nr.: 10.01.01.13160



Technical data

Suction cup material	High temperature material HT1
Material hardness [Shore A]	60.0 Shore A
Size	95.00

PFG 95 HT1-60 N009 M10x1.25-IG



Design data

Height H	21.50 mm
Head diameter Dk	68.2 mm
Spring stroke Z	6.0 mm
Diameter Ds	95.0 mm
Diameter Dmax(S)	102.0 mm

Note: Acceptable dimensional tolerances for elastomer parts concerning to DIN ISO 3302-1 M3

Design data PFG 95 HT1-60 N009 M10x1.25-IG



WWW.SCHMALZ.COM/10.01.01.13160

Flat suction cup (round)

PFG 95 HT1-60 N009 M10x1.25-IG



Art.-Nr.: 10.01.01.13160



Technical data

Nipple family	N 009
Suction cup material	High temperature material HT1
Material hardness [Shore A]	60.0 Shore A
Workpiece radius min. (convex)	200.0 mm
Suction force (-600mbar)	350.00 N
Weight	90.50 g
Volume	37.087 cm ³
Size	95.00
Product family	PFG

Note: Suction force: The suction force values are theoretical values at -0.6 bar vacuum and a dry, smooth and even workpiece surface – they are specified without safety factors. Hose inner diameter: The recommended hose diameter refers to a hose length of approx. 2 m



Ordering Data Accessories 10.01.01.13160

Typ		Item number
Suction cup connection nipple (inst)	SA-NIP N009 G1/4-AG	10.01.01.10097
Suction cup connection nipple (inst)	SA-NIP N009 G1/4-IG	10.01.01.10096
Suction cup cover	SU 100	10.01.01.12840



WWW.SCHMALZ.COM/10.01.01.13160