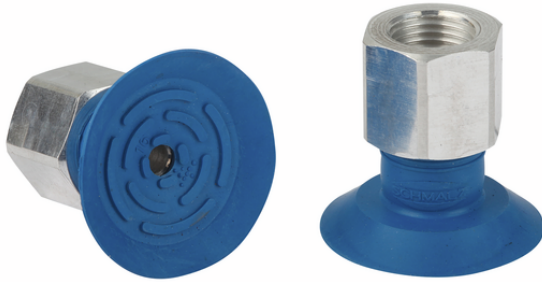


Flat suction cup (round)

## SGPN 24 HT1-60 G1/8-IG



Art.-Nr.: 10.01.01.12405



### Technical data

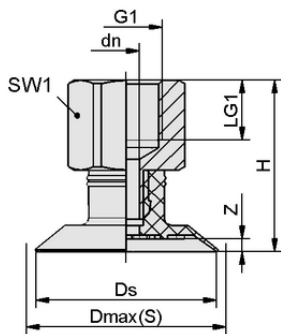
Suction cup material	High temperature material HT1
Material hardness [Shore A]	60.0 Shore A
Size	24.00
Vacuum connection	G 1/8"-F
Nipple material	Aluminum

SGPN 24 HT1-60 G1/8-IG

Flat suction cup SGPN (elastomer part + connection nipple) is delivered unassembled. The delivery consists of:

- Suction cup of type SGP – elastomer part, available in various diameters and materials
- Connection nipple of type SA-NIP – available with various threads

Available spare parts: suction cup SGP, connection nipple SA-NIP



### Design data

Height H	22.80 mm
Nominal diameter dn	3.50 mm
Thread G1	G 1/8"-F
Thread length LG1	8.0 mm
Key width SW1	14.0 mm
Spring stroke Z	1.7 mm
Diameter Ds	24.0 mm
Diameter Dmax(S)	25.5 mm

Note: Acceptable dimensional tolerances for elastomer parts concerning to DIN ISO 3302-1 M3

Design data SGPN 24 HT1-60 G1/8-IG



[WWW.SCHMALZ.COM/10.01.01.12405](http://WWW.SCHMALZ.COM/10.01.01.12405)

1

Flat suction cup (round)

## SGPN 24 HT1-60 G1/8-IG



Art.-Nr.: 10.01.01.12405



### Technical data

Suction cup material	High temperature material HT1
Material hardness [Shore A]	60.0 Shore A
Hose inner diameter (recom.) d	4.0 mm
Suction force (-600mbar)	11.00 N
Weight	5.20 g
Volume	0.851 cm <sup>3</sup>
Size	24.00
Number of folds	0.0
Product family	SGPN

Note: Suction force: The suction force values are theoretical values at -0.6 bar vacuum and a dry, smooth and even workpiece surface – they are specified without safety factors. Hose inner diameter: The recommended hose diameter refers to a hose length of approx. 2 m



### Ordering Data Spare Parts 10.01.01.12405

Typ		Item number
Suction Cup Connection Nipples	SA-NIP N016 G1/8-IG DN350	10.01.06.05731



### Ordering Data Wear Parts 10.01.01.12405

Typ		Item number
Flat suction cup (round)	SGP 24 HT1-60 N016	10.01.01.12402



[WWW.SCHMALZ.COM/10.01.01.12405](http://WWW.SCHMALZ.COM/10.01.01.12405)