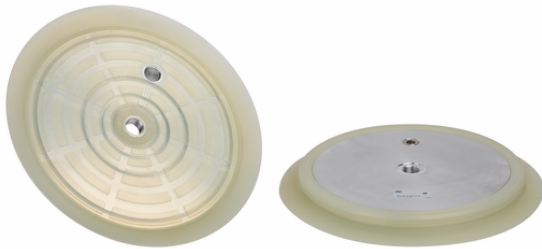


Suction plate (round)

SPU 300 SI-60 G1/2-IG



Art.-Nr.: 10.01.01.01135



Technical data

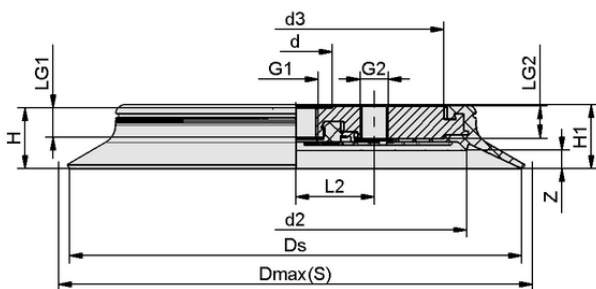
Suction cup material	Silicone SI
Material hardness [Shore A]	60.0 Shore A
Size	300.00
Connection	G1/2"-F

SPU 300 SI-60 G1/2-IG

Suction plate SPU (sealing ring + support plate) is delivered assembled. The assembly consists of:

- Sealing ring of type DR-SPU – elastomer part, available in various diameters
- Aluminum support plate, available with various threads
- Optional product addition: touch valve, steep sealing lip, peeling insert

Available spare parts: sealing ring DR-SPU, touch valve TV



Design data

Length L2	76.00 mm
Height H1	26.50 mm
Height H	25.00 mm
d2	253.0 mm
Internal diameter d	34.00 mm
Thread G1	G1/2"-F
Thread length LG1	13.5 mm
Thread G2	G1/2"-F
Thread length LG2	15.0 mm
Hole size d3	226.5 mm
Spring stroke Z	6.0 mm
Diameter Ds	300.0 mm
Diameter Dmax(S)	320.0 mm

Note: Acceptable dimensional tolerances for elastomer parts concerning to DIN ISO 3302-1 M3

Design data SPU 300 SI-60 G1/2-IG



WWW.SCHMALZ.COM/10.01.01.01135

1

Suction plate (round)

SPU 300 SI-60 G1/2-IG



Art.-Nr.: 10.01.01.01135



Technical data

Suction cup material	Silicone SI
Material hardness [Shore A]	60.0 Shore A
Hose inner diameter (recom.) d	12.0 mm
Workpiece radius min. (convex)	3,500.0 mm
Suction force (-600mbar)	3,810.00 N
Weight	2,200.00 g
Volume	491.000 cm ³
Size	300.00
Suction force d2	3,010.00 N
Number of folds	0.0
Product family	SPU

Note: Suction force: The suction force values are theoretical values at -0.6 bar vacuum and a dry, smooth and even workpiece surface – they are specified without safety factors. Hose inner diameter: The recommended hose diameter refers to a hose length of approx. 2 m



Ordering Data Accessories 10.01.01.01135

Typ		Item number
Suction cup cover	SU 300	10.01.01.12843



Ordering Data Wear Parts 10.01.01.01135

Typ		Item number
Sealing ring for SPU suction plate	DR-SPU 300 SI-55	10.01.01.01132



WWW.SCHMALZ.COM/10.01.01.01135