

Art.-Nr.: 10.01.01.01116

**Technical data**

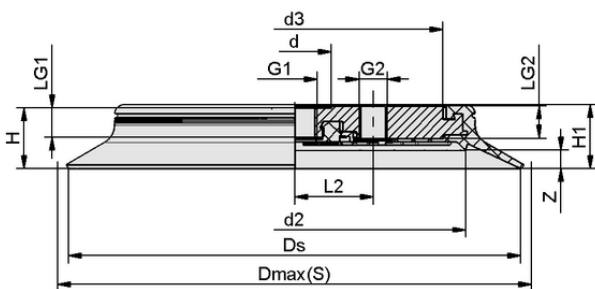
Suction cup material	Nitrile rubber NBR
Material hardness [Shore A]	55.0 Shore A
Size	160.00
Connection	G 1/2"-F

SPU 160 NBR-55 G1/2-IG

Suction plate SPU (sealing ring + support plate) is delivered assembled. The assembly consists of:

- Sealing ring of type DR-SPU – elastomer part, available in various diameters
- Aluminum support plate, available with various threads
- Optional product addition: touch valve, steep sealing lip, peeling insert

Available spare parts: sealing ring DR-SPU, touch valve TV

**Design data**

Length L2	36.50 mm
Height H1	26.00 mm
Height H	24.50 mm
d2	113.0 mm
Internal diameter d	34.00 mm
Thread G1	G 1/2"-F
Thread length LG1	13.5 mm
Thread G2	G 1/4"-F
Thread length LG2	15.0 mm
Hole size d3	88.0 mm
Spring stroke Z	8.0 mm
Diameter Ds	160.0 mm
Diameter Dmax(S)	170.0 mm

Note: Acceptable dimensional tolerances for elastomer parts concerning to DIN ISO 3302-1 M3

Design data SPU 160 NBR-55 G1/2-IG



Suction plate (round)

SPU 160 NBR-55 G1/2-IG



Art.-Nr.: 10.01.01.01116



Technical data

Suction cup material	Nitrile rubber NBR
Material hardness [Shore A]	55.0 Shore A
Hose inner diameter (recom.) d	12.0 mm
Workpiece radius min. (convex)	350.0 mm
Weight	400.00 g
Volume	142.000 cm ³
Size	160.00
Suction force d2	600.00 N
Number of folds	0.0
Product family	SPU

Note: Suction force: The suction force values are theoretical values at -0.6 bar vacuum and a dry, smooth and even workpiece surface – they are specified without safety factors. Hose inner diameter: The recommended hose diameter refers to a hose length of approx. 2 m



Ordering Data Accessories 10.01.01.01116

Typ		Item number
Suction cup cover	SU 160	10.01.01.12438



Ordering Data Wear Parts 10.01.01.01116

Typ		Item number
Sealing ring for SPU suction plate	DR-SPU 160 NBR-55	10.01.01.01111



WWW.SCHMALZ.COM/10.01.01.01116